

## How to Begin

To register for courses, you must be admitted to the University of Arizona.

1. Complete and submit the **Department Application** found at [http://www.coe.arizona.edu/epsp/edl\\_apply](http://www.coe.arizona.edu/epsp/edl_apply)
2. Apply online for **Non-Degree Admission** through the University of Arizona Graduate College at <http://grad.arizona.edu/admissions/types/non-degree-seeking-students>
3. Complete the **Domicile Affidavit** if you are claiming Arizona residency.
4. Submit the **Application Fee of \$35**.

Once admitted, contact Margo Sallet in the Educational Policy Studies & Practice office to request registration.

## For More Information

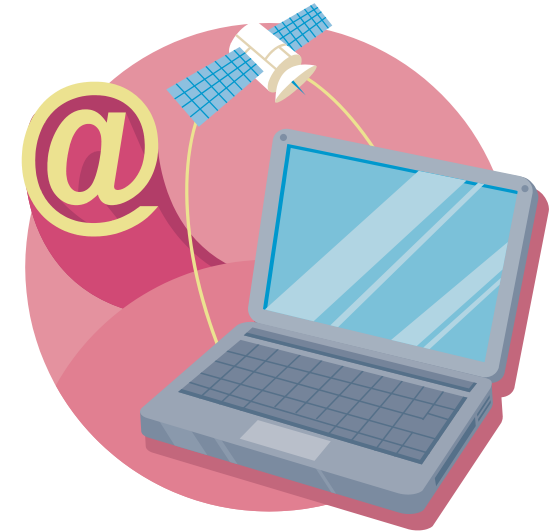
**Educational Leadership Program  
Educational Policy Studies  
& Practice  
College of Education  
PO Box 210069  
University of Arizona  
Tucson, AZ 85721-0069  
T: 520-626-7313  
F: 520-621-1875  
[lbrunder@email.arizona.edu](mailto:lbrunder@email.arizona.edu)  
[www.coe.arizona.edu/edl](http://www.coe.arizona.edu/edl)**

112140  
Educational Leadership Program  
College of Education  
P.O. Box 210069  
University of Arizona  
Tucson, Arizona 85721-0069



# EDUCATIONAL LEADERSHIP PROGRAM

## Hybrid Distance Learning Administrative Certification Program



College  
of  
Education  
THE UNIVERSITY OF ARIZONA

## Principal Certification

Certification for a **principal certificate** in Arizona requires teaching certification, 3 years verified teaching experience, a master's degree, designated coursework and a passing score on the AEPA test.

**EDL 560: Foundations of Educational Leadership: Theory, Research and Practice** Introduction to the foundations of educational leadership. An open social-systems model of schools provides the framework that relates theory and research to practice. (15 hours face-to-face)

**EDL 561: The Principalship** This course examines the functions and responsibilities of the school principal, including the political, social and human relations dimensions of the role. Students will be prepared for the AEPA exam and will be thoroughly familiar with the Arizona School Improvement Plan (ASIP) process. (30 hours face-to-face)

**EDL 562: Arizona School Law** Students will acquire a broad background in school law from a general perspective as well as a particular focus on Arizona law. (100% online)

**EDL 563: Supervision of Instructional Program** Examination and application of current supervisory theory in the school and/or school district setting. Special emphasis on the improvement of classroom instruction and on curriculum development and revision. (30 hours face-to-face)

**EDL 564: Personnel Administration in Education** A practical overview of the personnel functions in education, planning, organization, implementing and evaluating as personnel functions are addressed. Selection, motivation, retention and evaluation of the organization's "human capital" is emphasized. (15 hours face-to-face)

**EDL 565: School Finance** Introduction to the basics of school finance at both the local (school) and district levels, specific to the laws and regulations of the state of Arizona. (100% online)

**EDL 593: Principal Internship** This is the culminating course for the principal certificate, offered at your school site and supervised by UA faculty. The internship requires 200 hours of actual on-site experience in the principalship. (4-10 hours face-to-face)

## Superintendent Certification

Certification for a **superintendent certificate** in Arizona requires principal certification, a superintendency course, a superintendent's internship and a passing score on the AEPA test.

**EDL 682 - The Superintendency** In this course, you will see and hear from current and recently retired Superintendents from around the state (Dr. John Pedicone, retired Superintendent of Flowing Wells School District and Senior Faculty Fellow at the University of Arizona; Dr. Manuel Isquierdo of Sunnyside Unified School District; Dr. Vickie Balentine of Amphitheater Unified School District and Dr. David Schauer of the Kyrene Elementary District), among others. The course will be facilitated by Dr. Maria Menconi, former superintendent of both the Fountain Hills Unified School District and the Kyrene Elementary District and currently an adjunct faculty member in the Educational Leadership Program at UA. Her professional background combines educational leadership experience from Florida, Arkansas, New Mexico and Arizona ranging from classroom teacher to superintendent. In addition, you will learn from material created by Dr. Tony Wagner of the Harvard Change Leadership Group, Dr. Susan Moore Johnson of the Harvard Graduate School of Education, Dr. Cryss Brunner of the University of Minnesota, and Dr. Paul Houston, former Executive Director of the American Association of School Administrators. (12-15 hours face-to-face)

**EDL 593 - Internship** This is the culminating course for the superintendent certificate, offered at your district site and supervised by UA faculty through a combination of online and face-to-face meetings. The internship requires 200 hours of actual in-district experience in the superintendency.

## Educational Leadership Program Administrative Certification Hybrid Distance Learning Program

Beginning in spring 2009, the Educational Leadership Program in the College of Education at the University of Arizona has offered administrative certification courses for Principal and Superintendent certificates.

- **Hybrid distance learning**, means uniquely designed courses that blend online coursework with occasional classroom meetings
- **Flexibility and convenience** for the student who is part of a class without physically being inside the classroom.
- **Variety** of online instructional methods
- **Opportunity** to network with peers and exemplary faculty
- **Applied use of** current technology to facilitate acquisition of leadership theory and practice

Coursework is delivered via an e-learning environment using online chats, discussion forums, blogs and other tools to complete assignments and build an online professional learning community. In addition, instructors apply the Harvard University Case Method. To complement the online component, several classroom meetings are scheduled throughout the semester at times and locations convenient to the enrolled students.